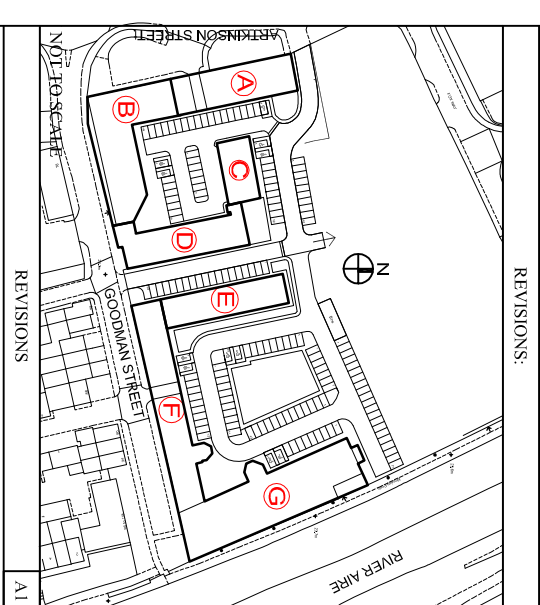


NOTES

The drawing is copyright and shall not be reproduced without permission. Do not scale. All dimensions are in millimetres unless otherwise stated. It is the Contractor's responsibility to check all dimensions on site. It is the Contractor's responsibility to ensure compliance with the Building Regulations. The drawing is to be read in conjunction with all Structural Engineers drawings and schedules.



REVISIONS

NO.	DESCRIPTION

JTM
CONSTRUCTION
(Leeds) Limited

BLOCK B
RESUBMISSION

- C 19/06/2018 Main Part Completed on file. QAB
- B 12/August 2018 Submission for permission to re-submit. QAB @ Robinson Street side removed & replaced with single entry Pass
- A 31/July 2017 Flood proof confirmed. RP

BDAD
BECKWITH DESIGN ASSOCIATES LTD
CHARTERED ARCHITECTURAL DESIGN CONSULTANTS

THE STUDIO
5, BRADSHAW ROAD
BD1 2AF
E-mail: admin@beckwithdesign.co.uk
Web: www.beckwithdesign.co.uk

JM Construction (Leeds) Ltd
Victoria Riverside, Atkinson Street,
Leeds, LS10 1PS

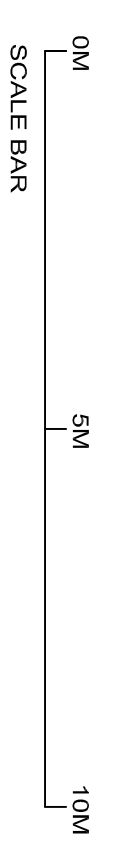
Residential Development (Block B)
Fifth Floor Plan

SCALE	DRAWN	JP
1:100 @ A1		
DATE	CHECKED	AL
18/02/2017		

288JMC-VE-B-P06c



LEVEL 5



BLOCK D